



INSTALLATION GUIDE

2010+ VW Mk6 Golf TDI C|C|B Intake System

Congratulations on your purchase of the AWE Tuning Cold Cone Box (C|C|B) intake system for the 2010+ VW Golf TDI.

Exquisite build quality with industry leading performance distinguishes this intake system from all others.

Contact us with any installation questions.
215-658-1670
AWE-Tuning.com
performance@AWE-Tuning.com

PARTS LIST

- | | |
|---------------------------------------|--------------------------|
| 1 carbon fiber filter box | 1 m6 allen head bolt |
| 1 cone air filter | 3 M6 flat washer |
| 1 powder coated metal air filter tube | 2 M6 nut |
| 1 filter box support bracket | 2 M6 lock washer |
| 2 filter box mounting grommet | 2 M6 cap screw |
| 2 rubber edging | 1 1/4" aluminum spacer |
| 1 filter box inlet gasket | 2 70-90 hose clamp |
| 8 filter box cover fastener | 1 2.75" silicone coupler |

Step 1

Remove the factory air box.

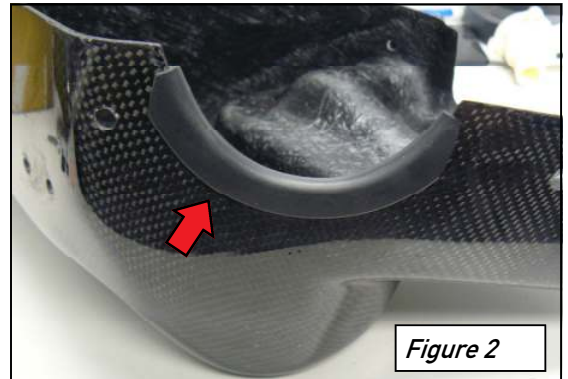
Then remove the corrugated hose that went between the exhaust manifold and the bottom of the factory air box, at arrow in **Figure 1**.



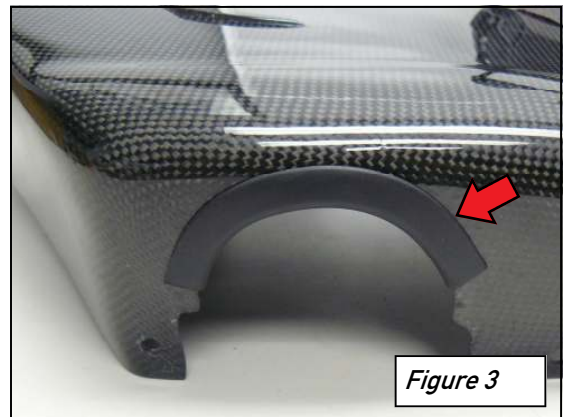
Step 2

Remove and discard the temporary plastic shipping screws holding the two halves of the AWE Tuning filter box together.

With the AWE Tuning filter box out of the car, install the piece of rubber edge trim that has angled ends onto the lower half of the carbon fiber box as shown in **Figure 2**.



Install the other edge trim piece onto the upper half as shown in **Figure 3**.



Step 3

Install the two included grommets into the bottom of the carbon fiber box as shown in **Figure 4**.

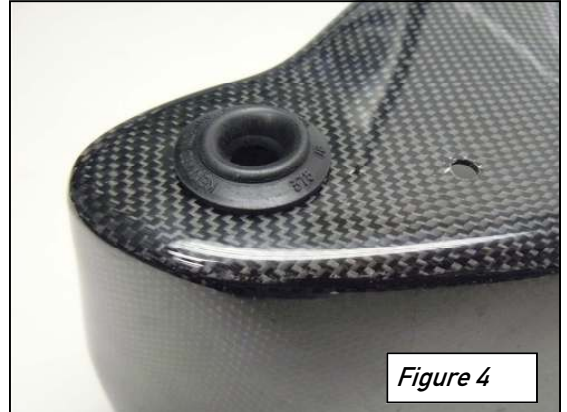


Figure 4

Step 4

Peel and stick the carbon fiber box lid inlet gasket as shown at arrow in **Figure 5**.

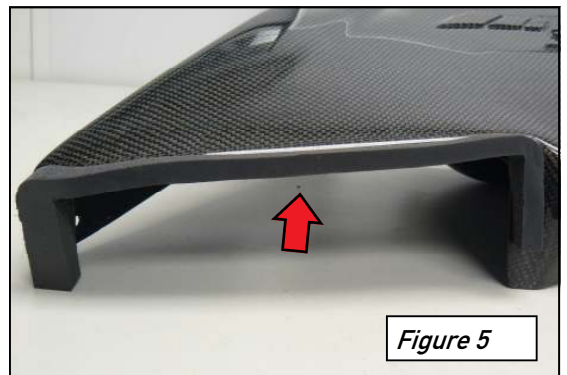


Figure 5

Step 5

Attach the lower box support bracket using the included hardware as shown in **Figure 6**.

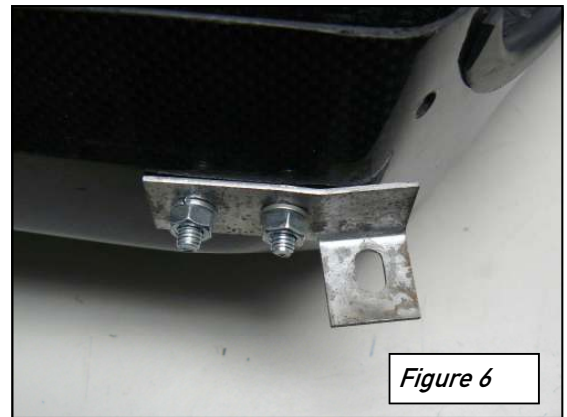


Figure 6

Step 6

Temporarily place the lower half of the filter box in the engine bay. Pop the rubber grommets in the bottom of the filter box over the two support studs at arrows in **Figure 7**.

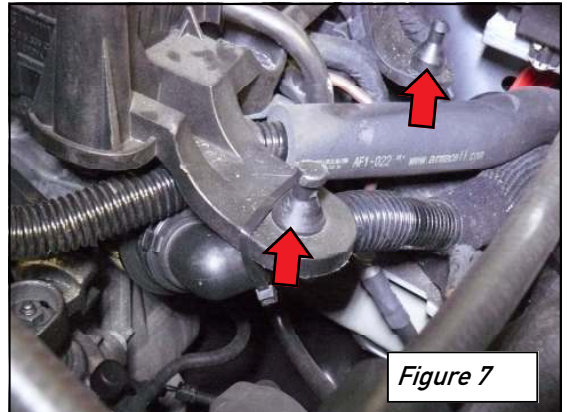


Figure 7

Step 7

Loosely install the powder coated air filter tube into the 2.75" silicone coupler using two 70-90 hose clamps and slide it over the inlet of the MAF sensor. Rest the other end in opening of the lower filter box.

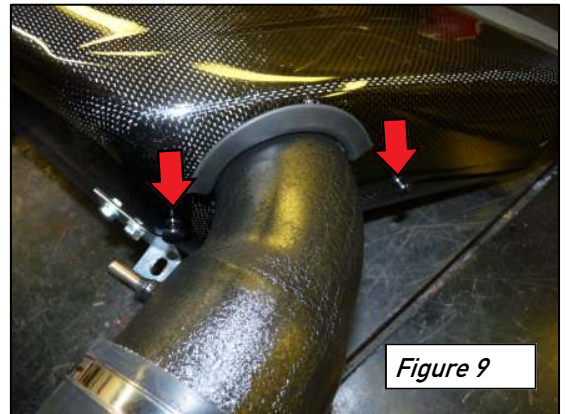
Place the air filter onto the other end of this tube using a 70-90 hose clamp and position it in the filter box as shown in **Figure 8**. Make sure the filter does not make contact with the sides of the box. Fully tighten the hose clamp attaching the filter to the tube.



Step 8

Place the top of the filter box on the bottom box half while it is still in the engine bay. Install two of the included plastic fasteners in the positions marked by the arrows in **Figure 9**. Push on the heads of the fasteners to complete their install.

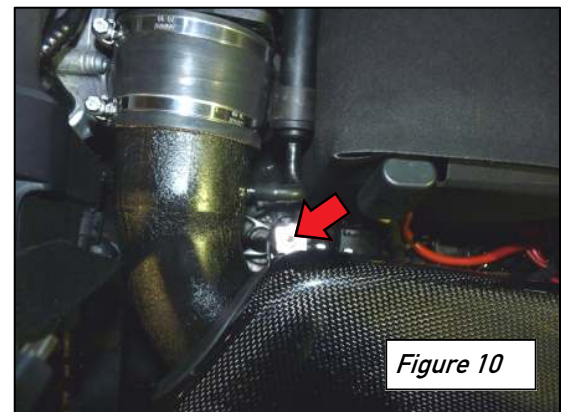
Now slip the air filter tube out from the silicone coupler and remove the entire filter box and air filter assembly from the vehicle. With the assembly removed from the vehicle, install the rest of the plastic cover fasteners into the remaining three holes of the filter box.



Step 9

Place the entire box and filter assembly back into the engine bay and slip the filter tube back into the silicone coupler still on the MAF sensor. Line up the box support bracket with the threaded boss as shown at arrow in **Figure 10**.

Place the included 1/4 inch aluminum spacer between the bracket and the boss and loosely insert the supplied M6 allen head bolt.

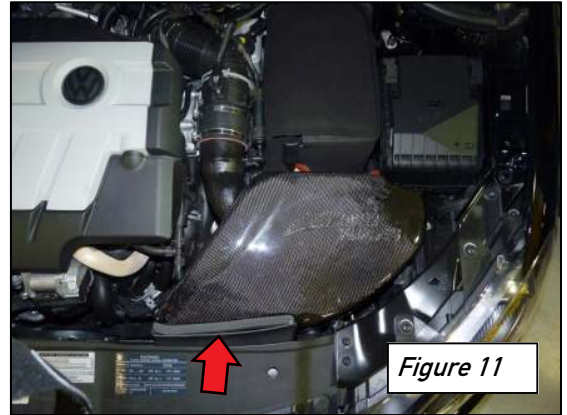


Step 10

Before tightening the bolt make sure the gasket at the front of the box sits flush with the radiator support inlet as shown. Adjust as necessary and then fully tighten the M6 allen head bolt.

Fully tighten both hose clamps on the MAF sensor silicone coupler.

Attach the factory rubber vacuum hose to the metal air filter tube.



ENJOY

This is a re-usable air filter that can be cleaned when dirty and put back into service.

Please inspect the air filter element every 25,000 miles for integrity. Clean every 50,000 miles under normal operating conditions, sooner in dusty conditions. Contact AWE Tuning to purchase a filter maintenance kit.



Any questions or comments,
please do not hesitate to contact us:

1-888-565-2257

AWE-Tuning.com

performance@AWE-Tuning.com



AWE Tuning
2385C Maryland Road
Willow Grove, PA 19090
215-658-1670
performance@awe-tuning.com

Thank you for choosing AWE Tuning as your performance automotive parts supplier. Please remember that a performance car is only as strong as its weakest link. Therefore, it is vital that you maintain your vehicle to factory specifications.

By installing or using the purchased product, the Consumer accepts this warranty and any specific Manufacturer warranties enclosed.

Limited Warranty

The following warranty is valid only in the United States.

The Manufacturer's full warranty applies to all products sold.

Secor Ltd. (AWE Tuning) warrants to the original retail purchaser (Consumer) this product (C|C|B TDI Intake System) against manufacturing defects for one year from date of original purchase.

Upon verification of warranty coverage, AWE Tuning will repair or replace the defective product at their discretion, without charge. This is the only remedy the Consumer has for any loss or damage, however arising, due to nonconformity in or defect of the product. This warranty does not cover consequential damage, loss of time or revenues, inconvenience, loss of use of vehicle, damage to the vehicle or components, or other incidental or indirect damage.

All warranties are void if the product was not installed by a certified auto mechanic, improperly serviced, modified, or used in a way not intended by the Manufacturer. Use of product in Motorsports or Racing conditions is grounds for warranty denial. Motorsports and Racing is an inherently abusive operational condition, and it is impossible to warranty for this type of usage.

The Consumer is responsible for ensuring that the product is installed in a safe and proper manner, and should cease usage of the product immediately if an unsafe or improper condition is noted. If an unsafe or improper condition is noted, the Consumer should then immediately contact the facility where the product was installed or AWE Tuning directly.

Please contact the original place of purchase for any warranty claims or explanations of this document.