



INSTALLATION GUIDE

2005.5-08 Audi A4 2.0T Front Mount Intercooler

FOR RACING USE ONLY

Congratulations on your purchase of the AWE Tuning Front Mount Intercooler for the 2005.5-08 B7 chassis A4 2.0T.

Exquisite build quality with industry leading performance distinguishes this intercooler from all others.

Contact us with any installation questions.

215-658-1670

AWE-Tuning.com

performance@AWE-Tuning.com

PARTS LIST

Parts list:

- 1 Intercooler core (at A in Figure 1)
- 1 Turbo outlet pipe (at B in Figure 1)
- 1 Core inlet pipe (at C in Figure 1)
- 1 Core outlet pipe (at D in Figure 1)
- 1 Throttle inlet pipe (at E in Figure 1)
- 1 Power steering cooler
- 1 7" power steering fluid hose
- 2 2.25" stainless T-bolt clamp
- 10 2.875" stainless T-bolt clamp
- 4 10-16mm hose clamp
- 2 M6x1x45mm bolt
- 2 M6 12mm metal washer
- 2 M6 18mm metal washer
- 4 Silicone washer
- 2 M6 nylock nut
- 2 M6x1x16mm allen head bolt
- 2 2" foam strip
- 2 #12 coarse thread screw
- 1 3/8" male barbed hose coupler
- 5 2.5" silicone coupler
- 1 1.875" silicone coupler
- 2 M8 x 70mm bolt

Required tools:

- Selection of screwdrivers
- Selection of sockets and a ratchet
- Torx bits



Figure 1

Step 1

Remove the front bumper, turbo outlet hose, intercoolers and shrouds, throttle body inlet hose, the plastic shrouds that run vertically on either side of the coolant radiator, and the power steering cooler hard line that runs in front of the radiator.

Unclip the outside air temperature sensor from power steering cooler.

Unclip the MAP sensor wiring harness and then remove the MAP sensor from the driver side intercooler.

Install the included M8 x 70mm bolts (at shown at arrow in **Figure 2**) to prevent the radiator assembly from shifting. Now remove the bumper reinforcement bar as one piece with the bumper dampers still attached.

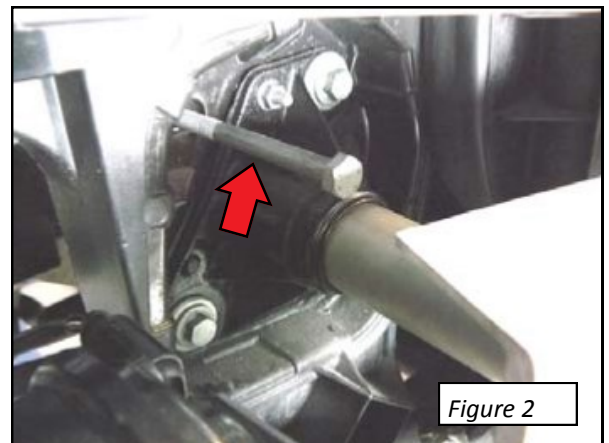
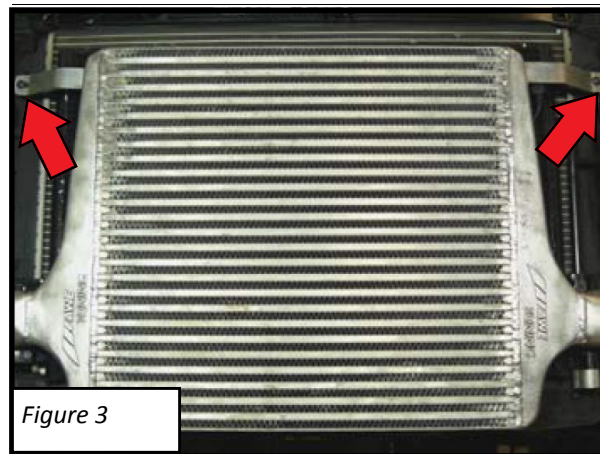


Figure 2

Step 2

Remove the two factory Torx screws that secure the A/C condenser to radiator at arrows in **Figure 3**.

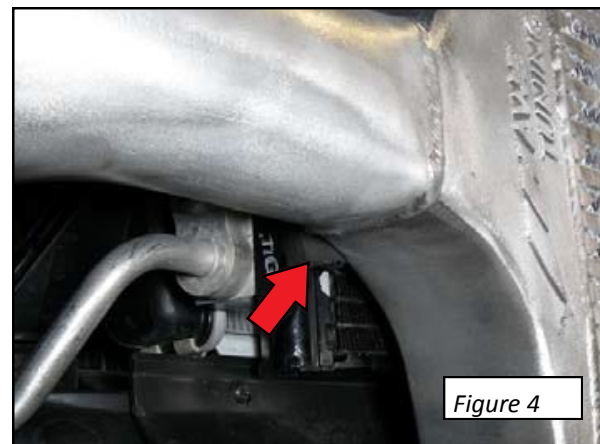
Hang the AWE Tuning core as shown using the included Phillips head coarse thread screws. Leave these screws slightly loose to allow for adjustment.



Step 3

Carefully pull the bottom of the core away from the front of the car (loosen the mounting screws slightly if necessary) and apply a piece of the included adhesive backed foam to the A/C condenser as shown at arrow in **Figure 4**. Make sure the inter-cooler core rests on this foam.

Repeat this step behind the driver side of the core, too.



Step 4

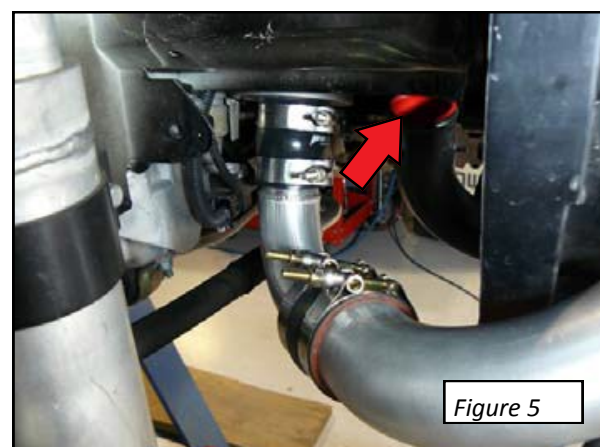
On the passenger side attach the core inlet pipe to the core using an enclosed 2.5" silicone coupler and two 2.875" T-bolt clamps.

Attach the turbo outlet pipe to the core inlet pipe using an enclosed 2.5" coupler and two 2.875" T-bolt clamps.

Attach the turbo outlet pipe to the turbo using an enclosed 1.875" silicone coupler and two 2.25" T-bolt clamps.

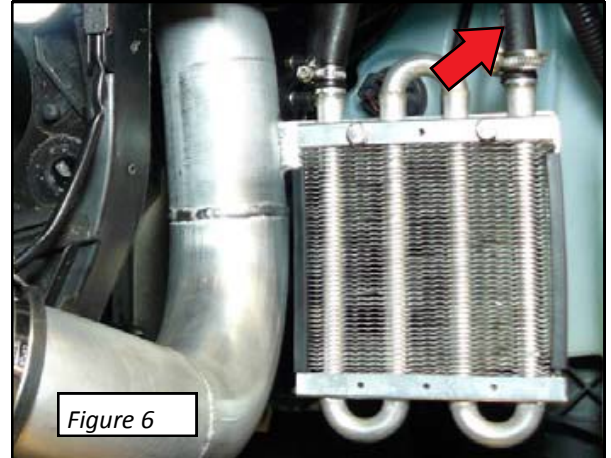
Leave the clamps slightly loose at this time to ease final alignment.

Block off the inlet and outlet of the factory intercooler pipe using the enclosed 2" red colored caps, seen at arrow in **Figure 5**.



Step 5

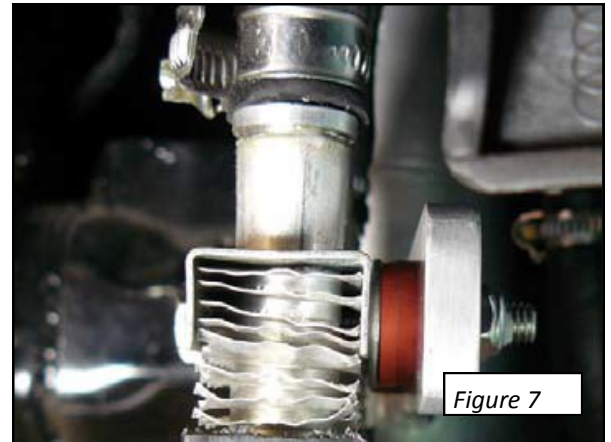
On the driver side, attach the power steering hoses to the new cooler, as shown in **Figure 6**, using the enclosed 10-16mm hose clamps. Use the enclosed 7" hose and 3/8" barbed fitting to extend the return hose, marked by the arrow in **Figure 6**.



Position the core outlet pipe as shown and attach the power steering cooler to it as shown in **Figure 7**.

From left to right in **Figure 7**, the fastener order is: M6 bolt, 12mm metal washer, (cooler), 18mm metal washer, two silicone washers, (bracket), nylock nut.

Attach the intercooler outlet pipe to the core using an enclosed 2.5" silicone coupler and two 2.875" T-bolt clamps.

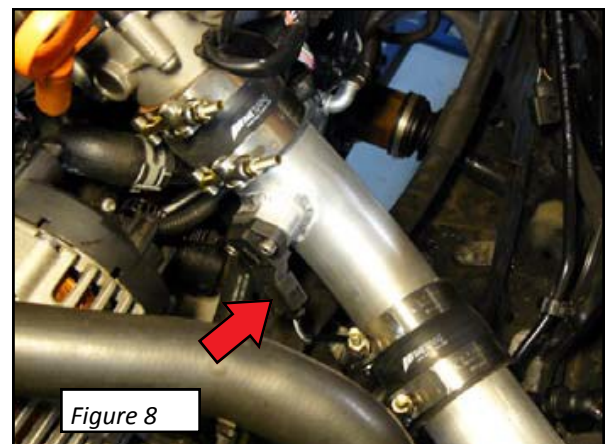


Step 6

Attach the throttle inlet pipe to the throttle body with an enclosed 2.5" silicone coupler and two 2.875" T-bolt clamps. Install MAP sensor on the inlet pipe, using the enclosed M6 allen head bolts.

Note the orientation of the MAP sensor at arrow in **Figure 8**. Make sure the wiring connector faces downwards towards the direction on the intercooler outlet pipe as shown.

Use an enclosed 2.5" silicone coupler and two 2.875" T-bolt clamps to attach the inlet pipe to the intercooler outlet pipe.



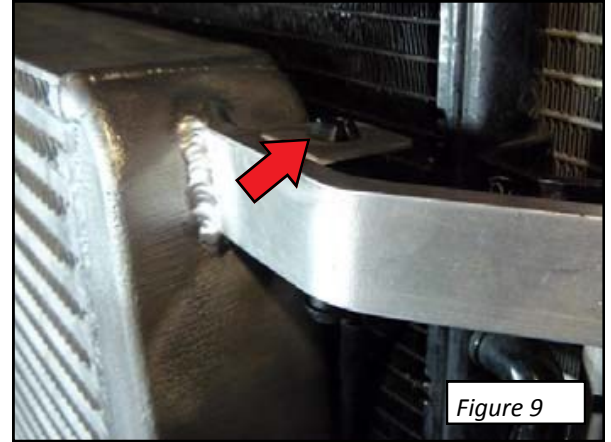
Step 7

Plug the outside air temperature sensor into its mounting bracket at arrow in **Figure 9**.

Test fit the bumper reinforcement bar and bumper cover to check for proper clearance. Adjust the intercooler alignment if necessary.

Tighten all hose clamps and fasteners. Reinstall the bumper reinforcement bar and bumper cover.

Start car and turn steering wheel lock to lock several times. Top off the power steering fluid and check levels after first drive.



ENJOY



Any questions or comments,
please do not hesitate to contact us:

215-658-1670
AWE-Tuning.com
performance@AWE-Tuning.com



AWE Tuning
2385C Maryland Road
Willow Grove, PA 19090
215-658-1670
performance@AWE-Tuning.com

Thank you for choosing AWE Tuning as your performance automotive parts supplier. Please remember that a performance car is only as strong as its weakest link. Therefore, it is vital that you maintain your vehicle to factory specifications.

By installing or using the purchased product, the Consumer accepts this warranty and any specific Manufacturer warranties enclosed.

Limited Defect Warranty

The following warranty is valid only in the United States.

The Manufacturer's full warranty applies to all products sold.

Secor Ltd. (AWE Tuning) warrants to the original retail purchaser (Consumer) this product (Audi B7 Front Mount Intercooler) against manufacturing defects for ONE YEAR.

Upon verification of warranty coverage, AWE Tuning will repair or replace the defective product at their discretion, without charge. This is the only remedy the Consumer has for any loss or damage, however arising, due to nonconformity in or defect of the product. This warranty does not cover consequential damage, loss of time or revenues, inconvenience, loss of use of vehicle, shipping costs, installation labor costs, damage to the vehicle or components, or other incidental or indirect damage.

All warranties are void if the product was not installed by a certified auto mechanic, improperly serviced, modified, or used in a way not intended by the Manufacturer. Use of product in Motorsports or Racing conditions is grounds for warranty denial. Motorsports and Racing is an inherently abusive operational condition, and it is impossible to warranty for this type of usage.

The Consumer is responsible for ensuring that the product is installed in a safe and proper manner, and should cease usage of the product immediately if an unsafe or improper condition is noted. If an unsafe or improper condition is noted, the Consumer should then immediately contact the facility where the product was installed or AWE Tuning directly.

Please contact the original place of purchase for any warranty claims or explanations of this document.